

Owner's Manual IPS LED MONITOR LED LCD MONITOR (LED MONITOR*)

*LG LED Monitors are LCD Monitors with LED Backlighting.

Please read this manual carefully before operating your set and retain it for future reference.

IPS LED(LED LCD) MONITOR MODEL

19M38A	20M38A	22M38A	24M38A	27MP38VQ
19M38D	20M38D	22M38D	24M38D	27MP38HQ
	20M38H	22M38H	24M38H	

CONTENTS

3 LICENSE

4 ASSEMBLING AND PREPARING

- 4 Unpacking
- 6 Parts and buttons
- 7 Moving and Lifting the Monitor
- 8 Setting up the Monitor set
 - 8 - Attaching the Stand Base
 - 9 - Detaching the Stand Base
 - 10 - Mounting on a table
 - 10 - Using the cable holder
 - 12 - Mounting on a wall

13 USING THE MONITOR SET

- 13 Connecting to a PC
 - 13 - D-SUB connection
 - 13 - DVI-D connection
 - 14 - HDMI connection
- 14 Connecting to AV Devices
 - 14 - HDMI connection
- 15 Connecting to External Devices
 - 15 - Peripheral device connection

16 CUSTOMIZING SETTINGS

- 17 Customizing Settings
 - 17 - Menu Settings
 - 19 -Picture
 - 20 -Color
 - 21 -Display
 - 21 -Audio
 - 22 -Others
- 23 READER Setting
- 24 FUNC. Setting
 - 24 -SMART ENERGY SAVING
 - 25 -Picture Mode
 - 26 -Color Weakness

27 TROUBLESHOOTING

29 SPECIFICATIONS

- 39 Preset Modes (Resolution)
- 40 Indicator

41 PROPER POSTURE

- 41 Proper posture for using the Monitor set.

20M38H 22M38H 24M38H 27MP38VQ 27MP38HQ

LICENSE

Each model has different licenses. Visit www.lg.com for more information on the license.



The terms HDMI and HDMI High-Definition Multimedia Interface, and the HDMI logo are trademarks or registered trademarks of HDMI Licensing LLC in the United States and other countries.

The following content is only applied to the monitor which is sold in Europe market and which needs to meet the ErP Directive:

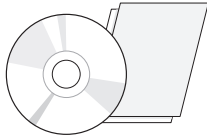
*This monitor is set to be turned off automatically in 4 hours after you turned on display if there is no adjustment to display.

*To make this setting be disabled, change the option to 'Off' in OSD menu of "Automatic Standby".

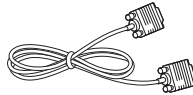
ASSEMBLING AND PREPARING

Unpacking

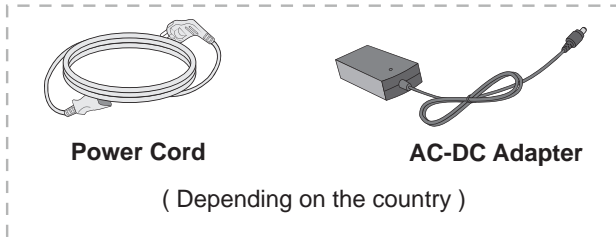
Check your product box for the following items. If there are any missing accessories, contact the local dealer where you purchased your product. The illustrations in this manual may differ from the actual product and accessories.



CD(Owner's Manual) / Card



D-SUB Cable
(This cable is not included in all countries.)



Power Cord

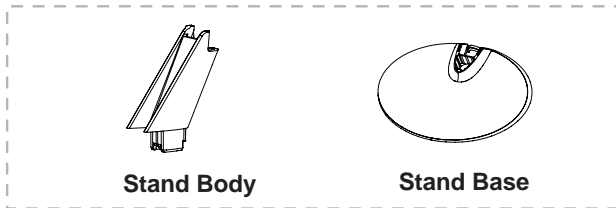
(Depending on the country)

AC-DC Adapter

or



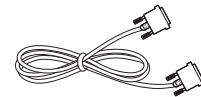
AC-DC Adapter
(Depending on the country)



Stand Body

Stand Base

- | | | | |
|--------|--------|--------|--------|
| 19M38A | 20M38A | 22M38A | 24M38A |
| 19M38D | 20M38D | 22M38D | 24M38D |
| | 20M38H | 22M38H | 24M38H |



DVI-D Cable

- | | | |
|--------|----------|--------|
| 19M38D | 20M38D | 22M38D |
| 24M38D | 27MP38VQ | |

(This cable is not included in all countries.)



Stand Body

Two Screws

Stand Base

- | | |
|----------|----------|
| 27MP38VQ | 27MP38HQ |
|----------|----------|



HDMI Cable

- | | | |
|----------|----------|--------|
| 20M38H | 22M38H | 24M38H |
| 27MP38VQ | 27MP38HQ | |

(This cable is not included in all countries.)

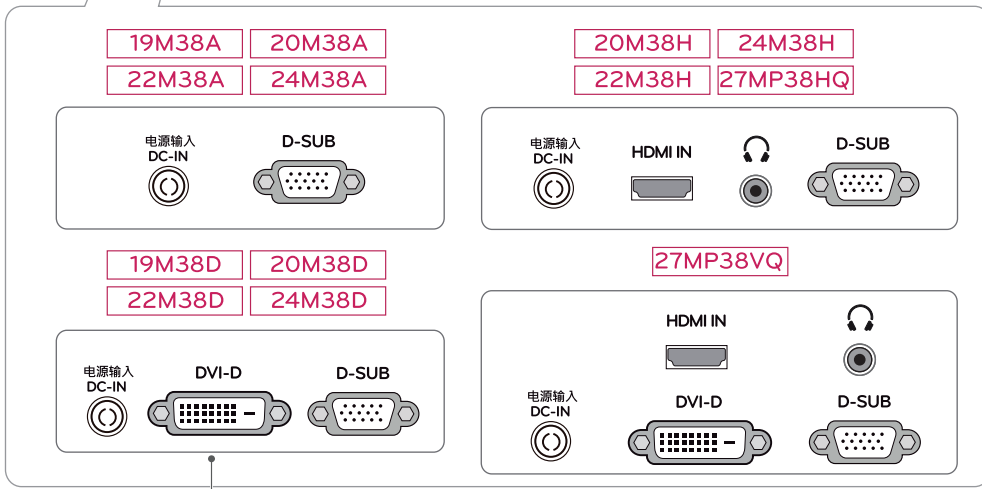
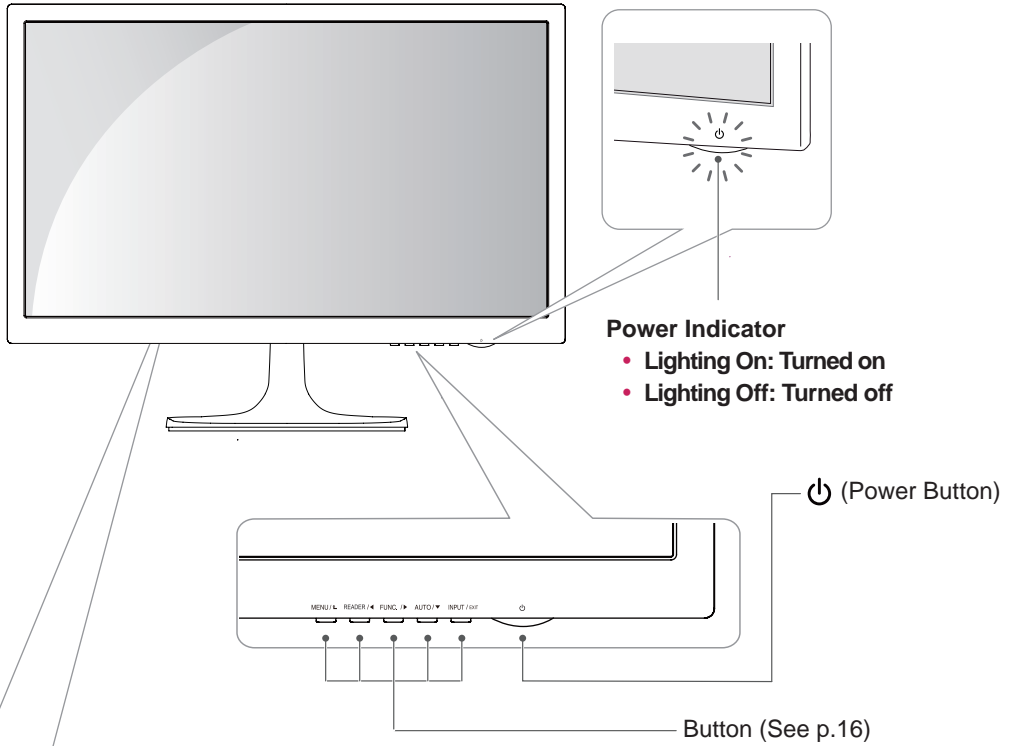
**CAUTION**

- Do not use any unapproved accessories to ensure the safety and product life span.
- Any damages or injuries by using unapproved accessories are not covered by the warranty.

**NOTE**

- The accessories supplied with your product may vary depending on the model.
- Product specifications or contents in this manual may be changed without prior notice due to upgrade of product functions.

Parts and buttons

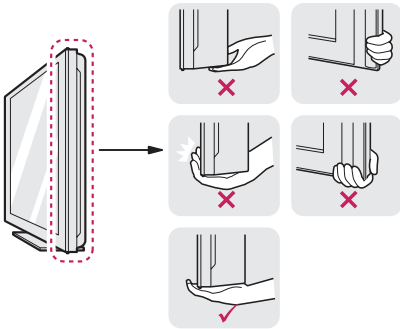


Connection panel (See p.13~15)

Moving and Lifting the Monitor

When moving or lifting the monitor, follow these instructions to prevent the monitor from being scratched or damaged and to ensure safe transportation regardless of its shape or size.

- It is advisable to place the monitor in the original box or packing material before attempting to move it.
- Before moving or lifting the monitor, disconnect the power cord and all cables.
- Hold the top and bottom of the monitor frame firmly. Do not hold the panel itself.



- When holding the monitor, the screen should face away from you to prevent it being scratched.

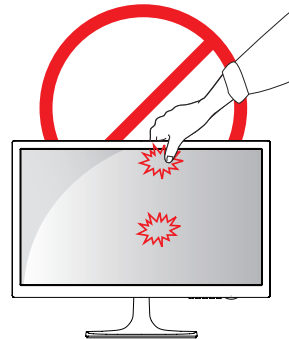


- When moving the monitor, avoid any strong shock or vibrations to the product.
- When moving the monitor, keep it upright, never turn the monitor on its side or tilt it sideways.



CAUTION

- As far as possible, avoid touching the monitor screen. This may result in damage to the screen or some of the pixels used to create images.



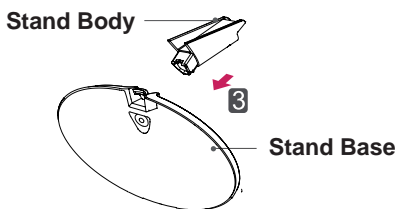
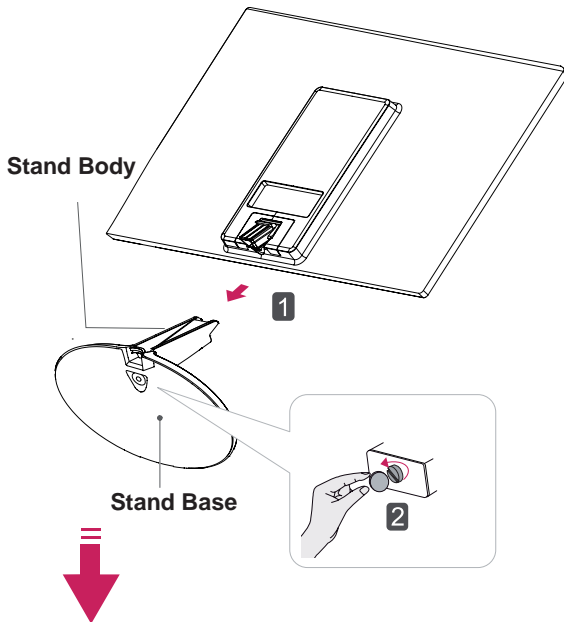
Detaching the Stand Base

- 1 Place the Monitor set with the screen side down on a flat and cushioned surface.

- 2

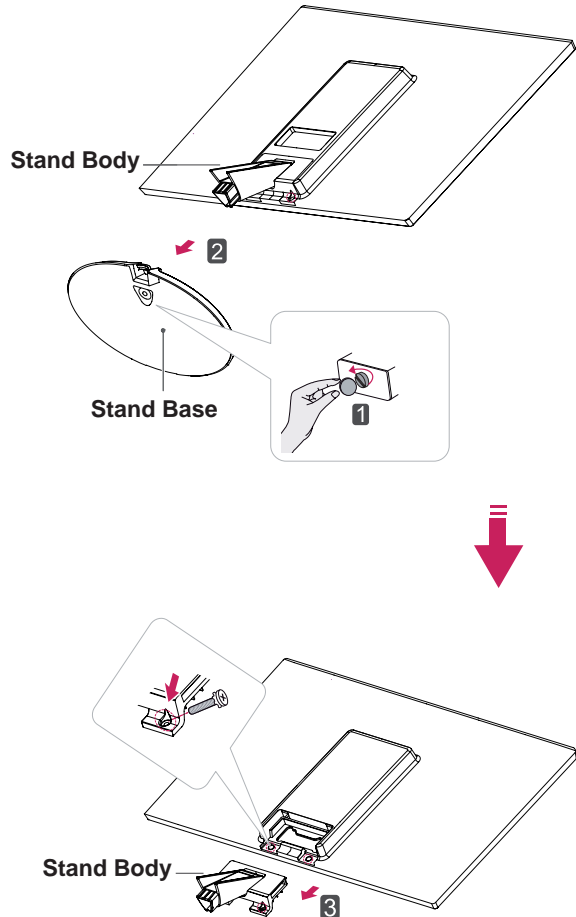
19M38A	20M38A	22M38A	24M38A
19M38D	20M38D	22M38D	24M38D
	20M38H	22M38H	24M38H

- 1 Pull out the **Stand Body** and **Stand Base** from the monitor set.
- 2 Turn the screw to the left with a coin.
- 3 Pull out the **Stand Base**.



27MP38VQ 27MP38HQ

- 1 Turn the screw to the left with a coin.
- 2 Pull out the **Stand Base** from the **Stand Body**.
- 3 Remove two screws and pull out the **Stand Body** from the monitor set.

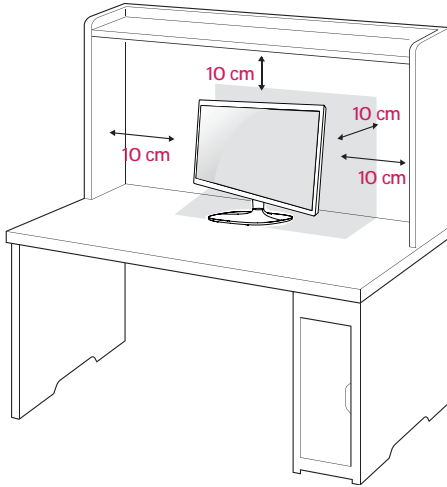


CAUTION

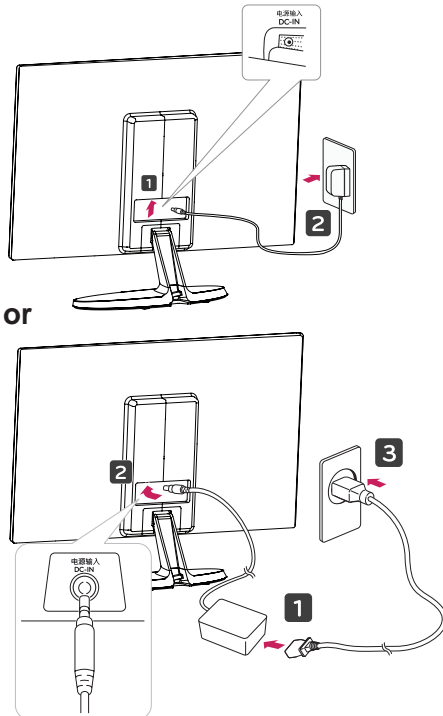
- This illustration depicts the general model of connection. Your monitor may differ from the items shown in the picture.
- Do not carry the product upside down holding only the stand base. The product may fall and get damaged or injure your foot.


Mounting on a table

- 1 Lift and tilt the Monitor set into its upright position on a table.
Leave a 10 cm (minimum) space from the wall for proper ventilation.



- 2 Connect the AC-DC Adapter and Power Cord to a wall outlet.



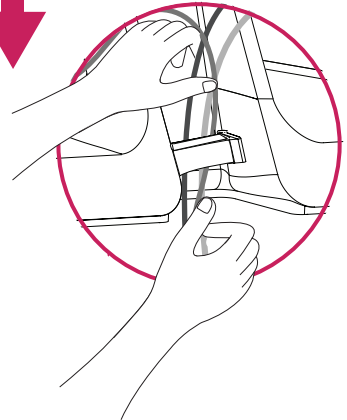
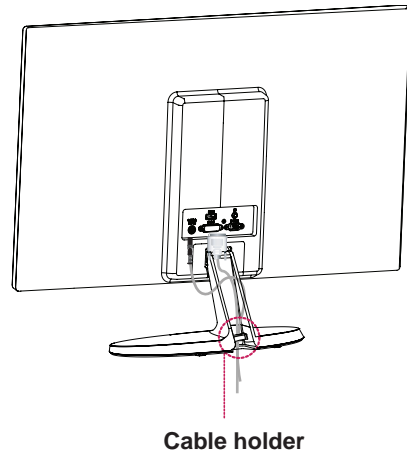
- 3 Press  (Power) button on the bottom switch panel to turn the power on.



CAUTION

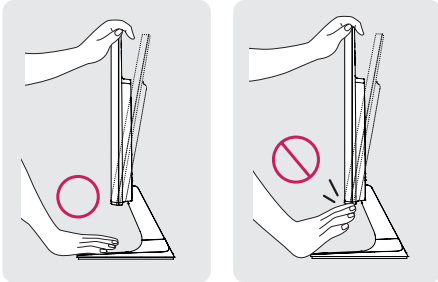
Unplug the power cord before moving the Monitor to another location. Otherwise electric shock may occur.

Using the cable holder

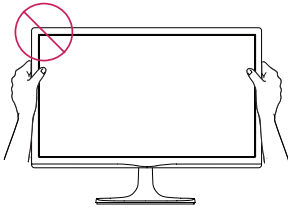


! WARNING

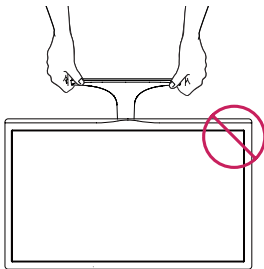
When you adjust the angle, do not hold the bottom of the Monitor set frame as shown on the following illustration, as may injure your fingers.



Do not touch or press the screen when adjusting the angle of the monitor.



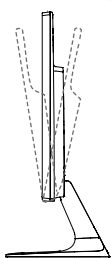
Do not hold this set like below picture. Monitor screen can detach from stand base and injure your body.

**! NOTE**

Tilt from +20 to -5 degrees up or down to adjust the angle of the Monitor set to suit your view.



Front

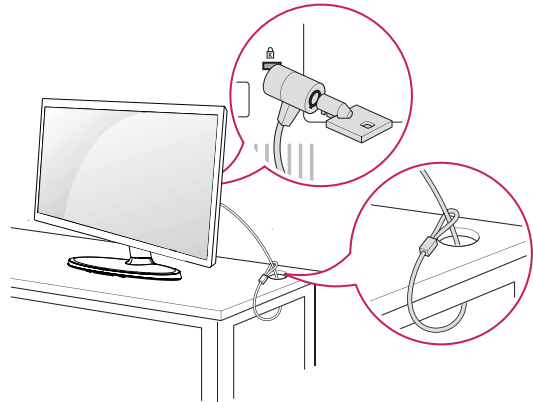


Rear

Using the Kensington security system

The Kensington security system connector is located at the back of the Monitor set. For more information of installation and using, refer to the manual supplied with the Kensington security system or visit <http://www.kensington.com>.

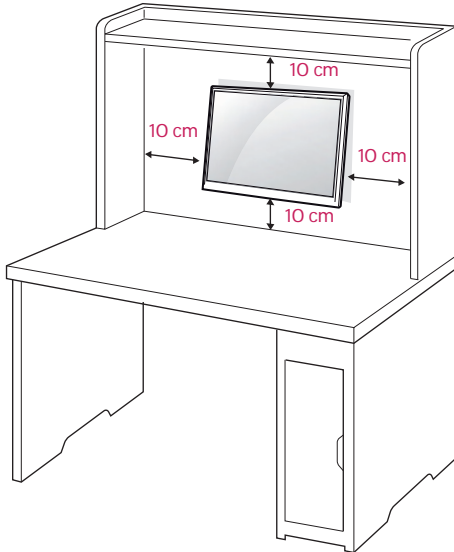
Connect the Kensington security system cable between the Monitor set and a table.

**! NOTE**

The Kensington security system is optional. You can obtain it from most electronics stores.

Mounting on a wall

For proper ventilation, allow a clearance of 10 cm on each side and from the wall. Detailed instructions are available from your dealer, see the optional Tilt Wall Mounting Bracket Installation and Setup Guide.



If you intend to mount the Monitor set to a wall, attach Wall mounting interface (optional parts) to the back of the set.

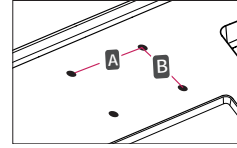
When you install the Monitor set using a wall mounting interface (optional parts), attach it carefully so it will not drop.

- 1 If you use screw longer than standard, the monitor might be damaged internally.
- 2 If you use improper screw, the product might be damaged and drop from mounted position. In this case, LG Electronics is not responsible for it.

Model	19M38A	20M38A	22M38A
	19M38D	20M38D	22M38D
	20M38H	22M38H	
Wall Mount (A x B)	75 x 75		
Standard screw	M4		
Number of screws	4		

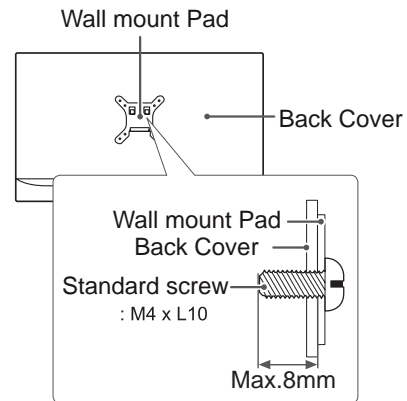
Model	24M38A	27MP38VQ	24M38H
	24M38D	27MP38HQ	
Wall Mount (A x B)	100 x 100		
Standard screw	M4		
Number of screws	4		

- Wall Mount (A x B)



CAUTION

- Disconnect the power cord first, and then move or install the Monitor set. Otherwise electric shock may occur.
- If you install the Monitor set on a ceiling or slanted wall, it may fall and result in severe injury.
- Use only an authorized LG wall mount and contact the local dealer or qualified personnel.
- Do not over tighten the screws as this may cause damage to the Monitor set and void your warranty.
- Use only screws and wall mounts that meet the VESA standard. Any damages or injuries by misuse or using an improper accessory are not covered by the warranty.
- Screw length from outer surface of back cover should be under 8mm.



NOTE

- Use the screws that are listed on the VESA standard screw specifications.
- The wall mount kit will include an installation manual and necessary parts.
- The wall mount bracket is optional. You can obtain additional accessories from your local dealer.
- The length of screws may differ depending on the wall mount. Be sure to use the proper length.
- For more information, refer to the instructions supplied with the wall mount.

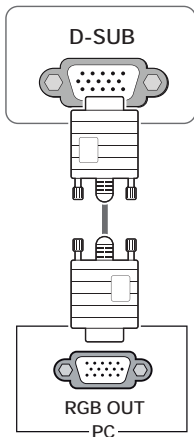
USING THE MONITOR SET

Connecting to a PC

- Your Monitor set supports Plug & Play*.
*Plug & Play: A PC recognizes a connected device that users connect to a PC and turn on, without device configuration or user intervention.

D-SUB connection

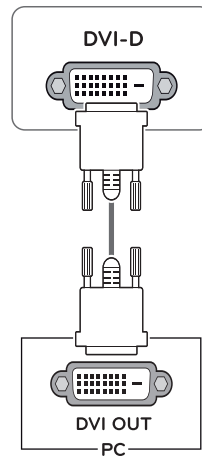
Transmits analog video from your PC to the Monitor set. Connect the PC and the Monitor set with the supplied D-sub 15 pin signal cable as shown in the following illustrations.



DVI-D connection

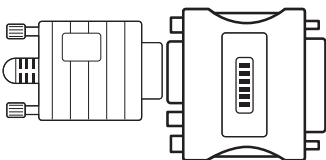
Transmits a digital video signal from your PC to the Monitor set. Connect the PC and the Monitor set with a DVI cable as shown in the following illustrations.

19M38D	20M38D	22M38D
24M38D	27MP38VQ	



NOTE

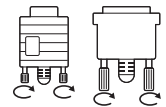
- When using a D-Sub signal input cable connector for Macintosh



- Mac adapter**
For Apple Macintosh use, a separate plug adapter is needed to change the 15 pin high density (3 row) D-SUB VGA connector on the supplied cable to a 15 pin 2 row connector.

CAUTION

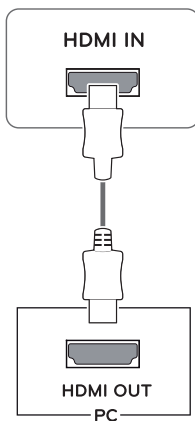
- Connect the signal input cable and tighten it by turning the screws clockwise.
- Do not press the screen with your finger for a long time as this may result in temporary distortion on the screen.
- Avoid displaying a fixed image on the screen for a long period of time to prevent image burn. Use a screensaver if possible.



HDMI connection

Transmits the digital video and audio signals from your PC to the Monitor set. Connect the PC and the Monitor set with the HDMI cable as shown in the following illustrations.

20M38H 22M38H 24M38H
27MP38VQ 27MP38HQ



NOTE

- If you use HDMI PC, it can cause compatibility problem.
- Use a certified cable with the HDMI logo attached. If you do not use a certified HDMI cable, the screen may not display or a connection error may occur.
- Recommended HDMI cable types
 - High-Speed HDMI[®]/TM Cable
 - High-Speed HDMI[®]/TM Cable with Ethernet

NOTE

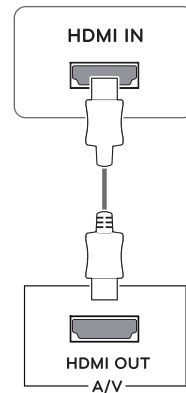
- When you want to use two PC in our Monitor, please connect the signal cable(D-SUB/ DVI-D/HDMI) respectively in Monitor set.
- If you turn the Monitor set on while it is cold, the screen may flicker. This is normal.
- Some red, green, or blue spots may appear on the screen. This is normal.

Connecting to AV Devices

HDMI connection

Transmits the digital video and audio signals from your AV devices to the monitor. Connect your AV device to the monitor with the HDMI cable as illustrated below.

20M38H 22M38H 24M38H
27MP38VQ 27MP38HQ



NOTE

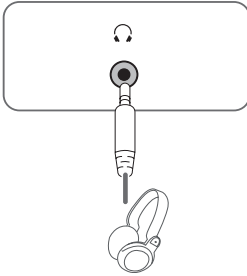
- If you use HDMI PC, it can cause compatibility problem.
- Use a certified cable with the HDMI logo attached. If you do not use a certified HDMI cable, the screen may not display or a connection error may occur.
- Recommended HDMI cable types
 - High-Speed HDMI[®]/TM Cable
 - High-Speed HDMI[®]/TM Cable with Ethernet

Connecting to External Devices

Peripheral device connection

Connect peripheral devices to the monitor using headphone ports.

20M38H	22M38H	24M38H
27MP38VQ	27MP38HQ	

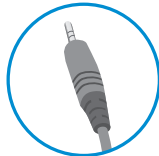


NOTE

- Peripheral devices are sold separately.
- Cables with angled plugs may have clearance issues, use straight plugs when possible.



Angle Type



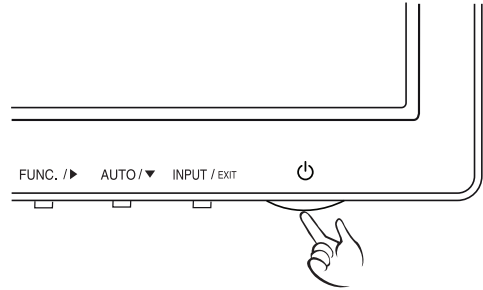
Straight Type

NOTE

- Headphones or speakers may not work normally, depending on the server PC settings.

Self Image Setting Function

Press the power button on the bottom panel to turn the power on. When monitor power is turned on, the "Self Image Setting" Function is executed automatically. (Only supported in Analog Mode)

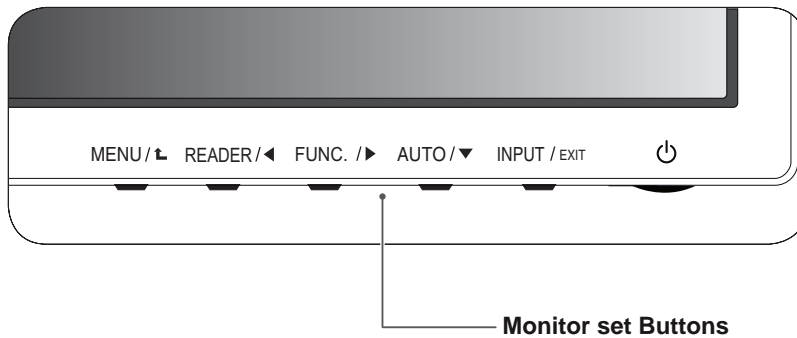


NOTE

- **"Self Image Setting" Function.**
This function provides the user with optimal display settings. When the user connects the monitor for the first time, this function automatically adjusts the display to optimal settings for individual input signals. (Only supported in Analog Mode)
- **'AUTO' Function.**
When you encounter problems such as blurry screen, blurred letters, screen flicker or tilted screen while using the device or after changing screen resolution, press the AUTO function button to improve resolution. (Only supported in Analog Mode)

CUSTOMIZING SETTINGS

- 1 Press the desired button on the bottom of the Monitor set.
- 2 Change the value of the menu item by pressing the buttons on the bottom of the Monitor set.
To return to the upper menu or set other menu items, use the up arrow (⬆) button.
- 3 Select **EXIT** to leave the OSD menu.

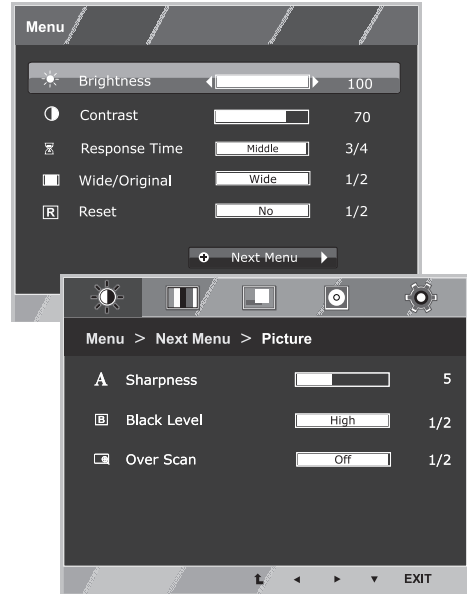


Button	Description
MENU / ⬆	<p>Accesses the main menus.(See p.17)</p> <p>OSD Locked/OSD Unlocked This function allow you to lock the current control settings, so that they cannot be inadvertently changed. Press and hold the MENU button for several seconds. Then OSD of "OSD Lock" will appear. After that, user can select lock or unlock by pressing left/right button. If user selects the "Lock" icon by pressing the "OK" button, the message "OSD Locked" will appear. Otherwise, "OSD Unlocked" will appear. After selecting the "Lock", If you want to change to Unlock, you can push the "MENU" button for several seconds. The message "OSD Unlocked" will appear.</p>
READER / ⬅	Use this button to enter Reader Mode menu. Its function works to display screen as paper-like picture for Eye comfort.If you want to more information(See p.23).
FUNC. / ➡	Use this button to enter SMART ENERGY SAVING , Picture Mode,Color Weakness menus.(See p.24~26)
AUTO / ▼	<p>When adjusting your display settings, always press the AUTO button on the MONITOR SETUP OSD. (Only supported in Analog Mode)</p> <p>The best display mode</p> <p>19M38A/19M38D: 1366 x 768 20M38A/20M38D/20M38H: 1600 x 900 22M38A/22M38D/22M38H/24M38A/24M38D/24M38H/27MP38HQ/ 27MP38VQ: 1920 x 1080</p>
INPUT / EXIT	<p>You can choose the input signal.</p> <ul style="list-style-type: none"> • When two input signals are connected, you can select the input signal (D-SUB/DVI-D/HDMI) you want. • When only one signal is connected, it is automatically detected. The default setting is D-SUB. <p>EXIT</p> <p>EXIT the OSD(On Screen Display).</p>
⏻ (Power Button)	<p>Turns the power on or off.</p> <p>Power Indicator The power indicator stays white if the display is running properly (On Mode). If the display is in Sleep Mode, the power indicator blinks white.</p>

Customizing Settings

Menu Settings

- 1 Press **MENU** button on the bottom of the Monitor set to display the **Menu** OSD.
- 2 Set the options by pressing the **Left** or **Right** buttons.
- 3 Select the "**Next Menu**" button to enter the more option settings.
- 4 Select **EXIT** to leave the OSD menu.
To return to the upper menu or set other menu items, use the up arrow (**Up**) button.







Each option is explained below.

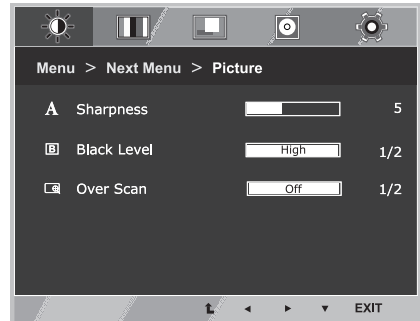
Menu	Analog	Digital	HDMI	Description
Brightness				To adjust the brightness, contrast of the screen.
Contrast				
Response Time 27MP38VQ 27MP38HQ				You can set a response time for displayed pictures based on the speed of the screen. For a normal environment, it is recommended that you use 'Off'. For a fast-moving picture, it is recommended that you use 'High'.
Wide/Original				Wide
				Switch to full screen mode according to input image signal.
Reset				Original
				Change the input image signal ratio to original. * This function works only if input resolution is lower than Monitor set ratio (16:9).
Reset				Restore all factory default settings. Press the Left , Right buttons to reset immediately.

Menu > Next Menu		Analog	Digital	HDMI	Description
Picture	Sharpness				To adjust the clearness of the screen
	Black Level <input type="text" value="20M38H"/> <input type="text" value="22M38H"/> <input type="text" value="24M38H"/> <input type="text" value="27MP38VQ"/> <input type="text" value="27MP38HQ"/>				To set offset level
	Over Scan <input type="text" value="20M38H"/> <input type="text" value="22M38H"/> <input type="text" value="24M38H"/> <input type="text" value="27MP38VQ"/> <input type="text" value="27MP38HQ"/>				To improve the clarity and stability of the screen
Color	Gamma				To customize the color of the screen
	Color Temp				
	Six Color <input type="text" value="27MP38VQ"/> <input type="text" value="27MP38HQ"/>				
	Color Reset <input type="text" value="27MP38VQ"/> <input type="text" value="27MP38HQ"/>				
Display	Horizontal				To adjust the position of the screen
	Vertical				
	Clock				To improve the clarity and stability of the screen
	Phase				
Audio	<input type="text" value="20M38H"/> <input type="text" value="22M38H"/> <input type="text" value="24M38H"/> <input type="text" value="27MP38VQ"/> <input type="text" value="27MP38HQ"/>				To adjust the volume
Others	Language				To customize the screen status for a user's operating environment
	Power Indicator				
	Automatic Standby <input type="text" value="20M38H"/> <input type="text" value="22M38H"/> <input type="text" value="24M38H"/> <input type="text" value="27MP38VQ"/> <input type="text" value="27MP38HQ"/>				
	Resolution				











- **Analog:** D-SUB(Analog signal) input.
- **Digital:** DVI-D(Digital signal) input.
- **HDMI:** HDMI(Digital signal) input.

Picture


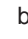



- 1 Press **MENU** button on the bottom of the Monitor set to display the **Menu OSD**.
- 2 Select the "**Next Menu**" button to enter the more option settings.
- 3 Enter to **Picture** by pressing the  button.
- 4 Set the options by pressing the  or  buttons.
- 5 Select **EXIT** to leave the OSD menu.
To return to the upper menu or set other menu items, use the up arrow () button.

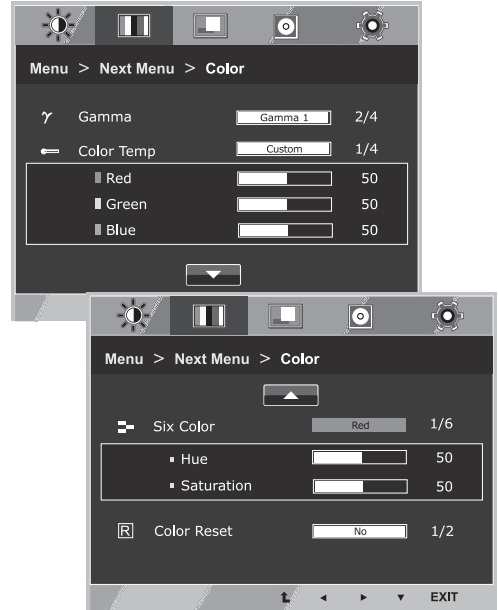


Each option is explained below.

Menu > Next Menu > Picture	Description
Sharpness	To adjust the clearness of the screen.
Black Level     	You can set the offset level. If you select 'High', the screen will be bright and if you select 'Low', the screen will be dark.(only for HDMI input) * Offset?As the criteria for video signal, it is the darkest screen the monitor can show.
Over Scan     	To select the range of output image for DTV timing in HDMI input.(only for HDMI input)Recommend overscan function to turn on when connect AV equipment.

Color






- 1 Press **MENU** button on the bottom of the Monitor set to display the **Menu OSD**.
- 2 Select the "**Next Menu**" button to enter the more option settings.
- 3 Select **Color** by pressing the  button.
- 4 Enter to **Color** by pressing the  button.
- 5 Set the options by pressing the  or  buttons.
- 6 Select **EXIT** to leave the OSD menu.
To return to the upper menu or set other menu items, use the up arrow () button.

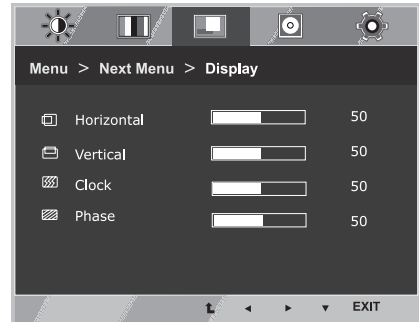


Each option is explained below.

Menu > Next Menu > Color	Description
Gamma	Set your own gamma value. : Gamma 0, Gamma 1, Gamma 2, Off on the monitor, high gamma values display blackish images and low gamma values display whitish images. If user don't want adjusted gamma, user can select Gamma off.
Color Temp	<p>Custom</p> <ul style="list-style-type: none"> • Red:Set your own red color levels. • Green: Set your own green color levels. • Blue:Set your own blue color levels. <p>Select the screen color. Warm: Set the screen to warm color temperature (more red). Medium: Set the screen to medium color temperature. Cool: Set the screen to cool color temperature (more blue).</p>
Six Color 27MP38VQ 27MP38HQ	Sets and stores the hue and saturation for six colors(Red/Green/Blue/Cyan/Magenta/Yellow) to satisfy the color requirements of a user.
Hue	Adjusts the screen hue.
Saturation	Adjusts the color sharpness on the screen. Lower values make the color sharpness weaker and colors lighter while higher values make the color sharpness stronger and colors dark.
Color Reset 27MP38VQ 27MP38HQ	Resets the color settings to the factory default settings for the current input device.

Display

- 1 Press **MENU** button on the bottom of the Monitor set to display the **Menu OSD**.
- 2 Select the "**Next Menu**" button to enter the more option settings.
- 3 Select **Display** by pressing the  button.
- 4 Enter to **Display** by pressing the  button.
- 5 Set the options by pressing the  or  buttons.
- 6 Select **EXIT** to leave the OSD menu.
To return to the upper menu or set other menu items, use the up arrow () button.

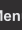






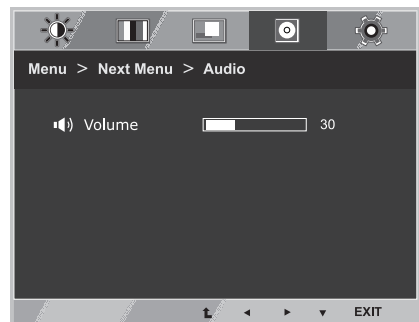
Each option is explained below.

Menu > Next Menu > Display	Description
Horizontal	To move image left and right.
Vertical	To move image up and down.
Clock	To minimize any vertical bars or stripes visible on the screen background. The horizontal screen size will also change.
Phase	To adjust the focus of the display. This item allows you to remove any horizontal noise and clear or sharpen the image of characters.

Audio

20M38H 22M38H 24M38H
27MP38VQ 27MP38HQ






- 1 Press **MENU** button on the bottom of the Monitor set to display the **Menu OSD**.
- 2 Select the "**Next Menu**" button to enter the more option settings.
- 3 Select **Audio** by pressing the  button.
- 4 Enter to **Volume** by pressing the  button.
- 5 Set the options by pressing the  or  buttons.
- 6 Select **EXIT** to leave the OSD menu.
To return to the upper menu or set other menu items, use the up arrow () button.

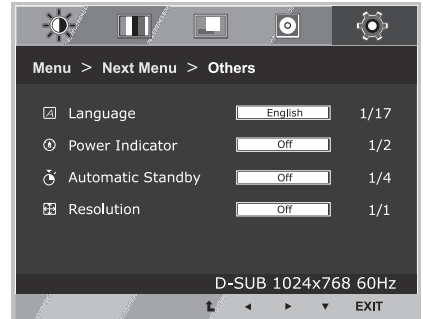


Each option is explained below.



















Menu > Next Menu > Audio	Description
Volume	To adjust the volume of headphone/earphone. (Only for HDMI input)

Others

- 1 Press **MENU** button on the bottom of the Monitor set to display the **Menu OSD**.
- 2 Select the "**Next Menu**" button to enter the more option settings.
- 3 Select **Others** by pressing the  button.
- 4 Enter to **Others** by pressing the  button.
- 5 Set the options by pressing the  or  buttons.
- 6 Select **EXIT** to leave the OSD menu.
To return to the upper menu or set other menu items, use the up arrow () button.

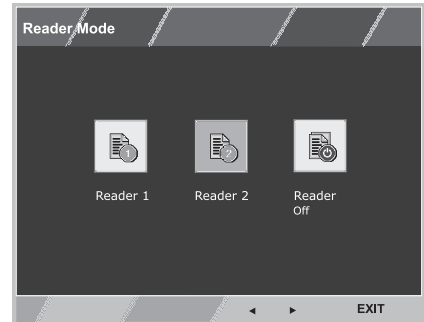


Each option is explained below.

Menu > Next Menu > Others	Description	
Language	To choose the language in which the control names are displayed.	
Power Indicator	Use this function to set the power indicator on the bottom side of the monitor to On or Off. If you set Off, it will go off. If you set On at any time, the power indicator will automatically be turned on.	
Automatic Standby     	The monitor will automatically switch to standby mode after a certain period.	
Resolution	 	Off, 1024x768, 1280x768, 1360x768, 1366x768
	       	Off, 1024x768, 1280x768, 1360x768, 1366x768
	  	Off, 1280x960, 1600x900
		Off, 1440x900, 1600x900

READER Setting

- 1 Press **READER** button on the bottom of the Monitor set to display the **Reader Mode** OSD.
- 2 Set the options by pressing the **←** or **→** buttons.
- 3 Select **EXIT** to leave the OSD menu.



Each option is explained below.

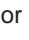


Reader Mode	Description
Reader 1	It is a mode that the screen is adjusted to the best for the newspaper. If you want screen more bright, you can control brightness in Menu OSD.
Reader 2	It is a mode that the screen is adjusted to the best for the cartoon. If you want screen more bright, you can control brightness in Menu OSD.
Reader Off	It is a mode that reader mode is off.

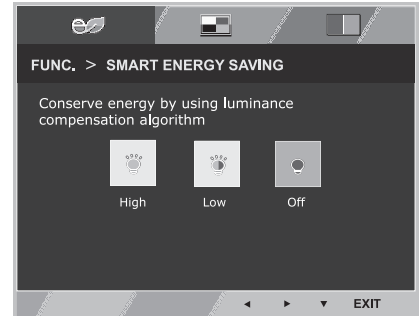
! NOTE

If option of Reader Mode is Reader 1 or Reader 2, Picture Mode will automatically be Custom and SMART ENERGY SAVING and Color Weakness will automatically be Off.

FUNC. Setting

SMART ENERGY SAVING

- 1 Press **FUNC.** button on the bottom of the Monitor set to display the **FUNC.** OSD.
- 2 Enter to **SMART ENERGY SAVING** by pressing the button.
- 3 Set the options by pressing the  or  buttons.
- 4 Select **EXIT** to leave the OSD menu. To return to the upper menu or set other menu items, use the up arrow () button.



Each option is explained below.

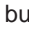
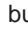



SMART ENERGY SAVING	Description
High	Enables SMART ENERGY SAVING you can save energy with this energy- high efficient function.
Low	Enables SMART ENERGY SAVING you can save energy with this energy- low efficient function.
Off	Disables SMART ENERGY SAVING .

* **SMART ENERGY SAVING:** Conserve energy by using luminance compensation algorithm.

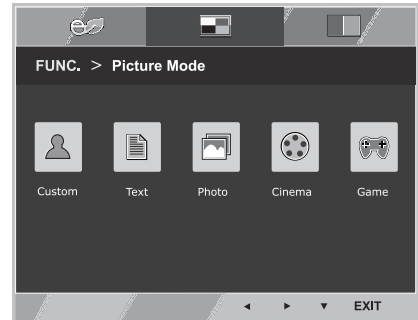
! NOTE

- Saving Data depends on the Panel. So, those values should be different from each panel and panel vendor. If option of SMART ENERGY SAVING is High or Low, monitor luminance becomes higher or lower depending on source.
- If option of SMART ENERGY SAVING is High or Low, Picture Mode will automatically be Custom and Reader Mode and Color Weakness will automatically be Off.

Picture Mode

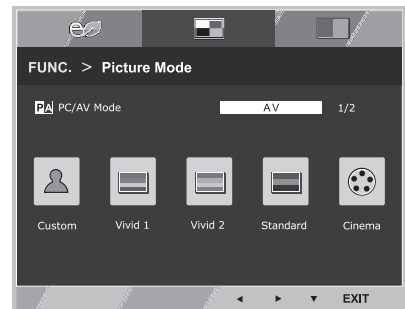
- 1 Press **FUNC.** button on the bottom of the Monitor set to display the **FUNC.** OSD.
- 2 Select **Picture Mode** by pressing the  button.
- 3 Enter to **Picture Mode** by pressing the  button.
- 4 Set the options by pressing the  or  buttons.
- 5 Select **EXIT** to leave the OSD menu. To return to the upper menu or set other menu items, use the up arrow()button.

PC Mode



AV Mode

20M38H 22M38H 24M38H
27MP38VQ 27MP38HQ



Each option is explained below.

Picture Mode	Description
Custom	It is a mode that the user can adjust each element. It can adjust the color mode of the Main Menu.
Text	It is a mode that the screen is adjusted to the best for the textworks.
Photo	It is a mode that the screen is adjusted to the best to view pictures.
Cinema	It is a mode that the screen is adjusted to the best to view the videos.
Game	It is a mode that the screen is adjusted to the best to play a game.






20M38H 22M38H 24M38H
27MP38VQ 27MP38HQ

Picture Mode	Description
Custom	It is a mode that the user can adjust each element. It can adjust the color mode of the Main Menu.
Vivid 1	Adjusts the video image for the retail environment by enhancing the contrast, brightness, Colour, and sharpness.
Vivid 2	
Standard	Adjusts the image for the normal environment.
Cinema	It is a mode that the screen is adjusted to the best to view the videos.

! NOTE

If option of Picture Mode is non-Custom , Reader Mode, SMART ENERGY SAVING and Color Weakness will automatically be Off.

Color Weakness

- 1 Press **FUNC.** button on the bottom of the Monitor set to display the **FUNC. OSD**.
- 2 Select **Color Weakness** by pressing the  button.
- 3 Enter to **Color Weakness** by pressing the  button.
- 4 Set the options by pressing the  or  buttons.
- 5 Select **EXIT** to leave the OSD menu. To return to the upper menu or set other menu items, use the up arrow () button.



Each option is explained below.

Color Weakness	Description
On	This mode is for users who cannot distinguish between red and green. It enables users with color weakness to easily distinguish between the two colors.
Off	It is a mode that Color Weakness mode is off.

! NOTE

- This is subsidiary for color weakness user. Therefore if you feel uncomfortable with the screen, please turn off this function.
- This function can't distinguish some colors in some images.
- If option of Color Weakness is not Off, Reader Mode and SMART ENERGY SAVING will be Off and Picture Mode will automatically be Custom.

TROUBLESHOOTING

Check the following before calling for service.

No image appears	
Is the power cord of the display connected?	<ul style="list-style-type: none"> • Check and see if the power cord is connected properly to the power outlet.
Is the power indicator light on?	<ul style="list-style-type: none"> • Press the Power button.
Is the power indicator flickering?	<ul style="list-style-type: none"> • If the display is in power saving mode, try moving the mouse or pressing any key on the keyboard to bring up the screen. • Try to turn on the PC.
Do you see an "OUT OF RANGE" message on the screen?	<ul style="list-style-type: none"> • This message appears when the signal from the PC (video card) is out of horizontal or vertical frequency range of the display. See the 'Specifications' section of this manual and configure your display again.
Do you see a "NO SIGNAL" message on the screen?	<ul style="list-style-type: none"> • When the monitor is on "No-Signal" in 5 minutes, the monitor goes to DPM mode.

Do you see a "OSD LOCKED" message on the screen?	
Do you see "OSD LOCKED" when you push MENU button?	<ul style="list-style-type: none"> • You can secure the current control settings, so that they cannot be inadvertently changed. You can unlock the OSD controls at any time by pushing the MENU button for several seconds: the message "OSD UNLOCKED" will appear.

Display image is incorrect	
Display Position is incorrect.	<ul style="list-style-type: none"> • Press the AUTO button to automatically adjust your display image to the ideal setting.
On the screen background, vertical bars or stripes are visible.	<ul style="list-style-type: none"> • Press the AUTO button to automatically adjust your display image to the ideal setting.
Any horizontal noise appearing in any image or characters are not clearly portrayed.	<ul style="list-style-type: none"> • Press the AUTO button to automatically adjust your display image to the ideal setting. • Check Control Panel Display Settings and adjust the display to the recommended resolution or adjust the display image to the ideal setting. Set the color setting higher than 24 bits (true color).

**CAUTION**

- Check **Control Panel Display Settings** and see if the frequency or the resolution were changed. If yes, readjust the video card to the recommend resolution.
- If the recommended resolution (optimal resolution) is not selected, letters may be blurred and the screen may be dimmed, truncated or biased. Make sure to select the recommend resolution.
- The setting method can differ by computer and O/S (Operation System), and resolution mentioned above may not be supported by the video card performance. In this case, please ask to the computer or the video card manufacturer.

Display image is incorrect

The screen color is mono or abnormal.	<ul style="list-style-type: none"> • Check if the signal cable is properly connected and use a screwdriver to fasten if necessary. • Make sure the video card is properly inserted in the slot. • Set the color setting higher than 24 bits (true color) at Control Panel Settings.
The screen blinks.	<ul style="list-style-type: none"> • Check if the screen is set to interlace mode and if yes, change it to the recommend resolution.

Do you see an "Unrecognized monitor, Plug&Play (VESA DDC) monitor found" message?

Have you installed the display driver?	<ul style="list-style-type: none"> • Be sure to install the display driver from the display driver CD (or diskette) that comes with your display. Or, you can also download the driver from our web site: http://www.lg.com. • Make sure to check if the video card supports Plug&Play function.
--	--

SPECIFICATIONS

19M38A

19M38D

Display	Screen Type	Flat Panel Active matrix-TFT LCD Anti-Glare coating
	Pixel Pitch	0.3 mm x 0.3 mm (Pixel Pitch)
Resolution	Max	1366 x 768 @ 60 Hz
	Recommend	VESA 1366 x 768 @ 60 Hz
Power consumption (Typ.)	On Mode : 13 W (ENERGY STAR® standard)* Sleep Mode 0.3 W Off Mode 0.3 W	
Power Input	19 V --- 0.8 A	
AC-DC Adapter	Type ADS-18SG-19-3 19016G, manufactured by SHENZHEN HONOR ELECTRONIC or Type ADS-18FSG-19 19016GPG, manufactured by SHENZHEN HONOR ELECTRONIC or Type ADS-18FSG-19 19016GPI, manufactured by SHENZHEN HONOR ELECTRONIC or Type ADS-18FSG-19 19016GPCU, manufactured by SHENZHEN HONOR ELECTRONIC or Type ADS-18FSG-19 19016GPB, manufactured by SHENZHEN HONOR ELECTRONIC or Type ADS-18FSG-19 19016EPCU-L, manufactured by SHENZHEN HONOR ELECTRONIC or Type LCAP42, manufactured by LIEN CHANG ELECTRONIC ENTERPRISE or Type LCAP36-A, manufactured by LIEN CHANG ELECTRONIC ENTERPRISE or Type LCAP36-E, manufactured by LIEN CHANG ELECTRONIC ENTERPRISE or Type LCAP36-I, manufactured by LIEN CHANG ELECTRONIC ENTERPRISE or Type LCAP36-U, manufactured by LIEN CHANG ELECTRONIC ENTERPRISE or Type LCAP60-A, manufactured by LIEN CHANG ELECTRONIC ENTERPRISE OUTPUT: 19 V --- 0.84 A	
Dimensions (Width x Height x Depth)	With Stand	441.3 mm x 350.2 mm x 167.8 mm
	Without Stand	441.3 mm x 278.1 mm x 57.3 mm
Weight	1.9 kg	
Tilt Range	-5° to 20°	
Environmental conditions	Operating Temperature	0°C to 40 °C
	Operating Humidity	80%
	Storage Temperature	-20°C to 60 °C
	Storage Humidity	85%

Product specifications shown above may be changed without prior notice due to upgrade of product functions.

* The power consumption level can be different by operating condition and monitor setting.

* The On mode power consumption is measured with ENERGY STAR® test standard.

* ENERGY STAR® is a US registered mark of the United States Environmental Protection Agency.

			19M38A	19M38D
Video Signal	Horizontal Frequency	30 kHz to 83 kHz (Automatic)		
		30 kHz to 61 kHz (Automatic)		
	Vertical Frequency	56 Hz to 75 Hz (D-SUB)		
		56 Hz to 75 Hz (DVI-D)		
		56 Hz to 75 Hz (HDMI)		
	Synchronization	Separate Sync.		
Digital				
Input Connector	15 pin D-SUB Connector			
	DVI-D Connector (Digital)			
	HDMI Connector			

SPECIFICATIONS

20M38A

20M38D

20M38H

Display	Screen Type	Flat Panel Active matrix-TFT LCD Anti-Glare coating
	Pixel Pitch	0.271 mm x 0.262 mm (Pixel Pitch)
Resolution	Max	1600 x 900 @ 60 Hz
	Recommend	VESA 1600 x 900 @ 60 Hz
Power consumption (Typ.)	On Mode : 16 W (ENERGY STAR® standard)* Sleep Mode 0.3 W Off Mode 0.3 W	
Power Input	19 V --- 0.8 A	
AC-DC Adapter	Type ADS-18SG-19-3 19016G, manufactured by SHENZHEN HONOR ELECTRONIC or Type ADS-18FSG-19 19016GPG, manufactured by SHENZHEN HONOR ELECTRONIC or Type ADS-18FSG-19 19016GPI, manufactured by SHENZHEN HONOR ELECTRONIC or Type ADS-18FSG-19 19016GPCU, manufactured by SHENZHEN HONOR ELECTRONIC or Type ADS-18FSG-19 19016GPB, manufactured by SHENZHEN HONOR ELECTRONIC or Type ADS-18FSG-19 19016EPCU-L, manufactured by SHENZHEN HONOR ELECTRONIC or Type LCAP42, manufactured by LIEN CHANG ELECTRONIC ENTERPRISE or Type LCAP36-A, manufactured by LIEN CHANG ELECTRONIC ENTERPRISE or Type LCAP36-E, manufactured by LIEN CHANG ELECTRONIC ENTERPRISE or Type LCAP36-I, manufactured by LIEN CHANG ELECTRONIC ENTERPRISE or Type LCAP36-U, manufactured by LIEN CHANG ELECTRONIC ENTERPRISE or Type LCAP60-A, manufactured by LIEN CHANG ELECTRONIC ENTERPRISE	
	OUTPUT: 19 V --- 0.84A	
Dimensions (Width x Height x Depth)	With Stand	463.0 mm x 358.8 mm x 167.8 mm
	Without Stand	463.0 mm x 286.5 mm x 57.4 mm
Weight	2.0 kg	
Tilt Range	-5° to 20°	
Environmental conditions	Operating Temperature	0°C to 40 °C
	Operating Humidity	80%
	Storage Temperature	-20°C to 60 °C
	Storage Humidity	85%

Product specifications shown above may be changed without prior notice due to upgrade of product functions.

* The power consumption level can be different by operating condition and monitor setting.

* The On mode power consumption is measured with ENERGY STAR® test standard.

* ENERGY STAR® is a US registered mark of the United States Environmental Protection Agency.

			20M38A	20M38D	20M38H
Video Signal	Horizontal Frequency	30 kHz to 83 kHz (Automatic)			
		30 kHz to 61 kHz (Automatic)			
	Vertical Frequency	56 Hz to 75 Hz (D-SUB)			
		56 Hz to 75 Hz (DVI-D)			
		56 Hz to 75 Hz (HDMI)			
	Synchronization	Separate Sync.			
Digital					
Input Connector	15 pin D-SUB Connector				
	DVI-D Connector (Digital)				
	HDMI Connector				

			22M38A	22M38D	22M38H
Video Signal	Horizontal Frequency	30 kHz to 83 kHz (Automatic)			
		30 kHz to 61 kHz (Automatic)			
	Vertical Frequency	56 Hz to 75 Hz (D-SUB)			
		56 Hz to 75 Hz (DVI-D)			
		56 Hz to 75 Hz (HDMI)			
	Synchronization	Separate Sync.			
Digital					
Input Connector	15 pin D-SUB Connector				
	DVI-D Connector (Digital)				
	HDMI Connector				

SPECIFICATIONS

24M38A

24M38D

24M38H

Display	Screen Type	Flat Panel Active matrix-TFT LCD Anti-Glare coating
	Pixel Pitch	0.272 mm x 0.272 mm (Pixel Pitch)
Resolution	Max	1920 x 1080 @ 60 Hz
	Recommend	VESA 1920 x 1080 @ 60 Hz
Power consumption (Typ.)	On Mode : 19 W (ENERGY STAR® standard)* Sleep Mode 0.3 W Off Mode 0.3 W	
Power Input	19 V --- 1.2 A	
AC-DC Adapter	Type ADS-40SG-19-3 19025G, manufactured by SHENZHEN HONOR ELECTRONIC or Type ADS-40FSG-19 19025GPG-1, manufactured by SHENZHEN HONOR ELECTRONIC or Type ADS-40FSG-19 19025GPBR-1, manufactured by SHENZHEN HONOR ELECTRONIC or Type ADS-40FSG-19 19025GPI-1, manufactured by SHENZHEN HONOR ELECTRONIC or Type ADS-40FSG-19 19025GPCU-1, manufactured by SHENZHEN HONOR ELECTRONIC or Type ADS-40FSG-19 19025GPB-2, manufactured by SHENZHEN HONOR ELECTRONIC or Type ADS-25FSG-19 19025EPCU-1L, manufactured by SHENZHEN HONOR ELECTRONIC or Type LCAP21, manufactured by LIEN CHANG ELECTRONIC ENTERPRISE or Type LCAP26-A, manufactured by LIEN CHANG ELECTRONIC ENTERPRISE or Type LCAP26-E, manufactured by LIEN CHANG ELECTRONIC ENTERPRISE or Type LCAP26-I, manufactured by LIEN CHANG ELECTRONIC ENTERPRISE or Type LCAP26-B, manufactured by LIEN CHANG ELECTRONIC ENTERPRISE or Type LCAP51, manufactured by LIEN CHANG ELECTRONIC ENTERPRISE or Type PA-1021-23, manufactured by Lite-On Technology Corporation	
	OUTPUT: 19 V --- 1.3 A	
Dimensions (Width x Height x Depth)	With Stand	556.2 mm x 415.1 mm x 186.7 mm
	Without Stand	556.2 mm x 344.0 mm x 56.8 mm
Weight	2.8 kg	
Tilt Range	-5° to 20°	
Environmental conditions	Operating Temperature	0°C to 40°C
	Operating Humidity	80%
	Storage Temperature	-20°C to 60 °C
	Storage Humidity	85%

Product specifications shown above may be changed without prior notice due to upgrade of product functions.

* The power consumption level can be different by operating condition and monitor setting.

* The On mode power consumption is measured with ENERGY STAR® test standard.

* ENERGY STAR® is a US registered mark of the United States Environmental Protection Agency.

			24M38A	24M38D	24M38H
Video Signal	Horizontal Frequency	30 kHz to 83 kHz (Automatic)			
		30 kHz to 61 kHz (Automatic)			
	Vertical Frequency	56 Hz to 75 Hz (D-SUB)			
		56 Hz to 75 Hz (DVI-D)			
		56 Hz to 75 Hz (HDMI)			
	Synchronization	Separate Sync.			
Digital					
Input Connector	15 pin D-SUB Connector				
	DVI-D Connector (Digital)				
	HDMI Connector				

SPECIFICATIONS

27MP38HQ 27MP38VQ

Display	Screen Type	Flat Panel Active matrix-TFT LCD Anti-Glare coating
	Pixel Pitch	0.311 mm x 0.311 mm (Pixel Pitch)
Resolution	Max	1920 x 1080 @ 60 Hz
	Recommend	VESA 1920 x 1080 @ 60 Hz
Power consumption (Typ.)	On Mode : 27 W (ENERGY STAR® standard)* Sleep Mode 0.3 W Off Mode 0.3 W	
Power Input	19 V $\overline{\text{---}}$ 1.6 A	
AC-DC Adapter	Type ADS-40SG-19-3 19032G, manufactured by SHENZHEN HONOR ELECTRONIC or Type ADS-40FSG-19 19032GPG-1, manufactured by SHENZHEN HONOR ELECTRONIC or Type ADS-40FSG-19 19032GPBR-1, manufactured by SHENZHEN HONOR ELECTRONIC or Type ADS-40FSG-19 19032GPI-1, manufactured by SHENZHEN HONOR ELECTRONIC or Type ADS-40FSG-19 19032GPCU-1, manufactured by SHENZHEN HONOR ELECTRONIC or Type ADS-32FSG-19 19032EPCU-1L, manufactured by SHENZHEN HONOR ELECTRONIC or Type LCAP21A, manufactured by LIEN CHANG ELECTRONIC ENTERPRISE or Type LCAP26A-A, manufactured by LIEN CHANG ELECTRONIC ENTERPRISE or Type LCAP26A-E, manufactured by LIEN CHANG ELECTRONIC ENTERPRISE or Type LCAP26A-I, manufactured by LIEN CHANG ELECTRONIC ENTERPRISE or Type LCAP26A-B, manufactured by LIEN CHANG ELECTRONIC ENTERPRISE or Type LCAP51A, manufactured by LIEN CHANG ELECTRONIC ENTERPRISE or Type PA-1031-23, manufactured by Lite-On Technology Corporation	
	OUTPUT: 19 V $\overline{\text{---}}$ 1.7 A	
Dimensions (Width x Height x Depth)	With Stand	641.4 mm x 459.7 mm x 203.0 mm
	Without Stand	641.4 mm x 393.0 mm x 48.2 mm
Weight	4.4 kg	
Tilt Range	-5° to 20°	
Environmental conditions	Operating Temperature	0°C to 40 °C
	Operating Humidity	80%
	Storage Temperature	-20°C to 60 °C
	Storage Humidity	85%

Product specifications shown above may be changed without prior notice due to upgrade of product functions.

* The power consumption level can be different by operating condition and monitor setting.

* The On mode power consumption is measured with ENERGY STAR® test standard.

* ENERGY STAR® is a US registered mark of the United States Environmental Protection Agency.

			27MP38HQ	27MP38VQ
Video Signal	Horizontal Frequency	30 kHz to 83 kHz (Automatic)		
		30 kHz to 61 kHz (Automatic)		
	Vertical Frequency	56 Hz to 75 Hz (D-SUB)		
		56 Hz to 75 Hz (DVI-D)		
		56 Hz to 75 Hz (HDMI)		
	Synchronization	Separate Sync.		
Digital				
Input Connector	15 pin D-SUB Connector			
	DVI-D Connector (Digital)			
	HDMI Connector			

Preset Modes (Resolution)

D-SUB/DVI-D Timing

19M38A 19M38D

Display Modes (Resolution)	Horizontal Frequency(kHz)	Vertical Frequency(Hz)	Polarity(H/V)	
720 x 400	31.468	70	-/+	
640 x 480	31.469	60	-/-	
640 x 480	37.500	75	-/-	
800 x 600	37.879	60	+/+	
800 x 600	46.875	75	+/+	
832 x 624	49.725	75	-/-	
1024 x 768	48.363	60	-/-	
1366 x 768	47.712	60	+/+	Recommend Mode

20M38A 20M38D 20M38H

Display Modes (Resolution)	Horizontal Frequency(kHz)	Vertical Frequency(Hz)	Polarity(H/V)	
720 x 400	31.468	70	-/+	
640 x 480	31.469	60	-/-	
640 x 480	37.500	75	-/-	
800 x 600	37.879	60	+/+	
800 x 600	46.875	75	+/+	
1024 x 768	48.363	60	-/-	
1024 x 768	60.023	75	+/+	
1152 x 864	67.500	75	+/+	
1600 x 900	60.000	60	+/+	Recommend Mode

22M38A 22M38D 22M38H 24M38A 24M38D 24M38H 27MP38HQ 27MP38VQ

Display Modes (Resolution)	Horizontal Frequency(kHz)	Vertical Frequency(Hz)	Polarity(H/V)	
720 x 400	31.468	70	-/+	
640 x 480	31.469	60	-/-	
640 x 480	37.500	75	-/-	
800 x 600	37.879	60	+/+	
800 x 600	46.875	75	+/+	
1024 x 768	48.363	60	-/-	
1024 x 768	60.023	75	+/+	
1152 x 864	67.500	75	+/+	
1280 x 1024	63.981	60	+/+	
1280 x 1024	79.976	75	+/+	
1680 x 1050	65.290	60	-/+	
1920 x 1080	67.500	60	+/+	Recommend Mode

HDMI Timing

20M38H

Factory support mode (Preset Mode)	Horizontal Frequency(kHz)	Vertical Frequency(Hz)	HDMI
480P	31.50	60	<input type="radio"/>
576P	31.25	50	<input type="radio"/>
720P	37.50	50	<input type="radio"/>
720P	45.00	60	<input type="radio"/>

22M38H 24M38H 27MP38VQ 27MP38HQ

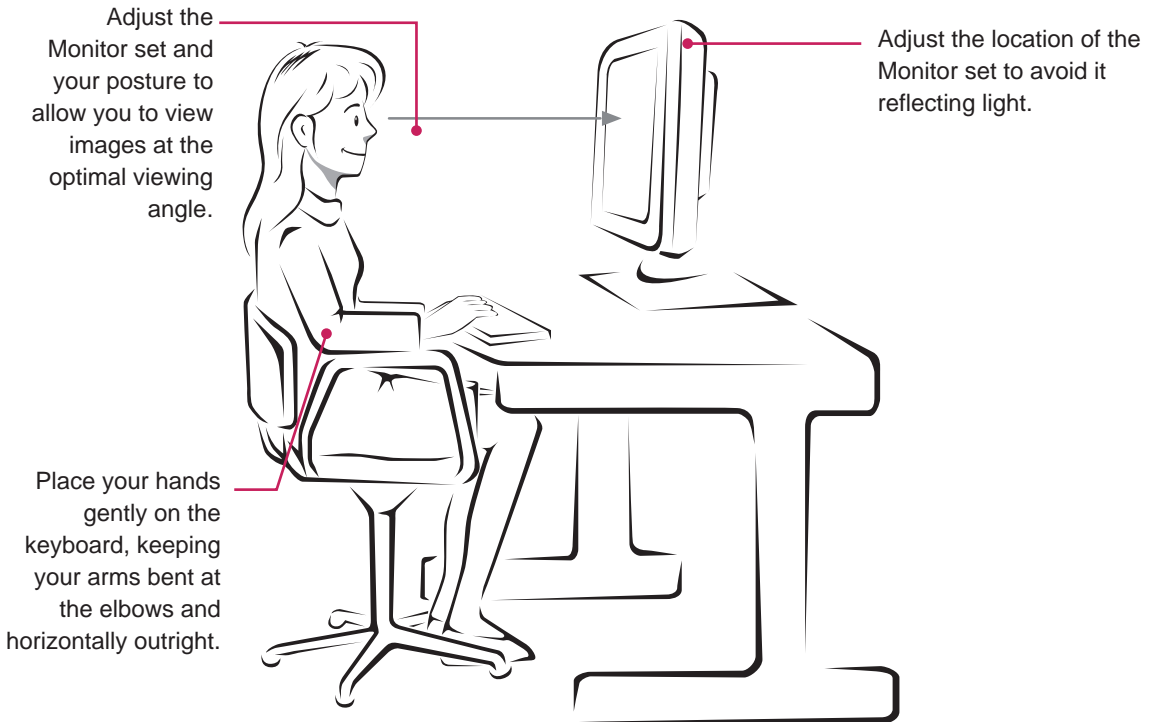
Factory support mode (Preset Mode)	Horizontal Frequency(kHz)	Vertical Frequency(Hz)	HDMI
480P	31.50	60	<input type="radio"/>
576P	31.25	50	<input type="radio"/>
720P	37.50	50	<input type="radio"/>
720P	45.00	60	<input type="radio"/>
1080P	56.25	50	<input type="radio"/>
1080P	67.50	60	<input type="radio"/> Recommend Mode

Indicator

Mode	LED Color
On Mode	White (Only 15 seconds)
Sleep Mode	Blinking White
Off Mode	Off

PROPER POSTURE

Proper posture for using the Monitor set.





Declaration of Conformity

Trade Name: LG

Model : 19M38A, 19M38D, 20M38A, 20M38D,
20M38H, 22M38A, 22M38D, 22M38H,
24M38A, 24M38D, 24M38H, 27MP38HQ,
27MP38VQ

Responsible Party: LG Electronics Inc.

Address : 1000 Sylvan Ave. Englewood Cliffs
NJ 07632 U.S.A

TEL: 201-266-2534

*above information is only for USA FCC Regulatory

Make sure to read the Safety Precautions before using the product.

Keep the Owner's Manual (CD) in an accessible place for future reference.

The model and serial number of the SET is located on the back and one side of the SET. Record it below should you ever need service.

MODEL _____

SERIAL _____

ENERGY STAR® is a set of power-saving guidelines issued by the U.S.Environmental Protection Agency(EPA).



As an ENERGY STAR® Partner LGE U. S. A.,Inc. has determined that this product meets the ENERGY STAR® guidelines for energy efficiency.

Refer to ENERGY STAR.gov for more information on the ENERGY STAR® program.